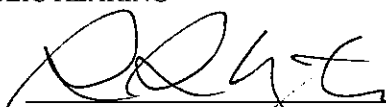


Wolf Lake County Forest Road # 4, Crow Wing County, Minnesota

PARCEL #	RE_CODE	SECTION	TOWNSHIP	RANGE	FEENAME	LEGAL DESCRIPTION
PARCEL 1	690353303000009	35	46	29	TAX FORFEITED	GOV LOT 3
PARCEL 2	690353102000009	35	46	29	TAX FORFEITED	GOV LOT 2
PARCEL 3	690352400000009	35	46	29	TAX FORFEITED	SE1/4 OF NW1/4
PARCEL 4	690351300000009	35	46	29	TAX FORFEITED	SW1/4 OF NE1/4
PARCEL 5	690352100000009	35	46	29	WEYERHAEUSER COMPANY	NE1/4 OF NW1/4

May 7, 2008  
DATE OF PUBLIC HEARING

  
RACHEL REABE NYSTROM, CHAIR  
BOARD OF COUNTY COMMISSIONERS  
CROW WING COUNTY, MINNESOTA

ATTEST:   
DEBORAH A. ERICKSON, COUNTY AUDITOR  
CROW WING COUNTY, MINNESOTA

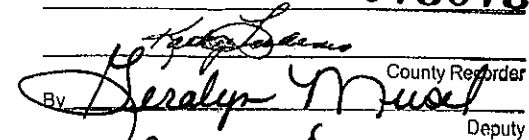
Adopted at Brainerd, Minnesota, this 10<sup>th</sup> day of June, 2008

COUNTY RECORDING SPACE BELOW

Office of County Recorder  
County of Crow Wing, MN }

*n/c  
COWK*

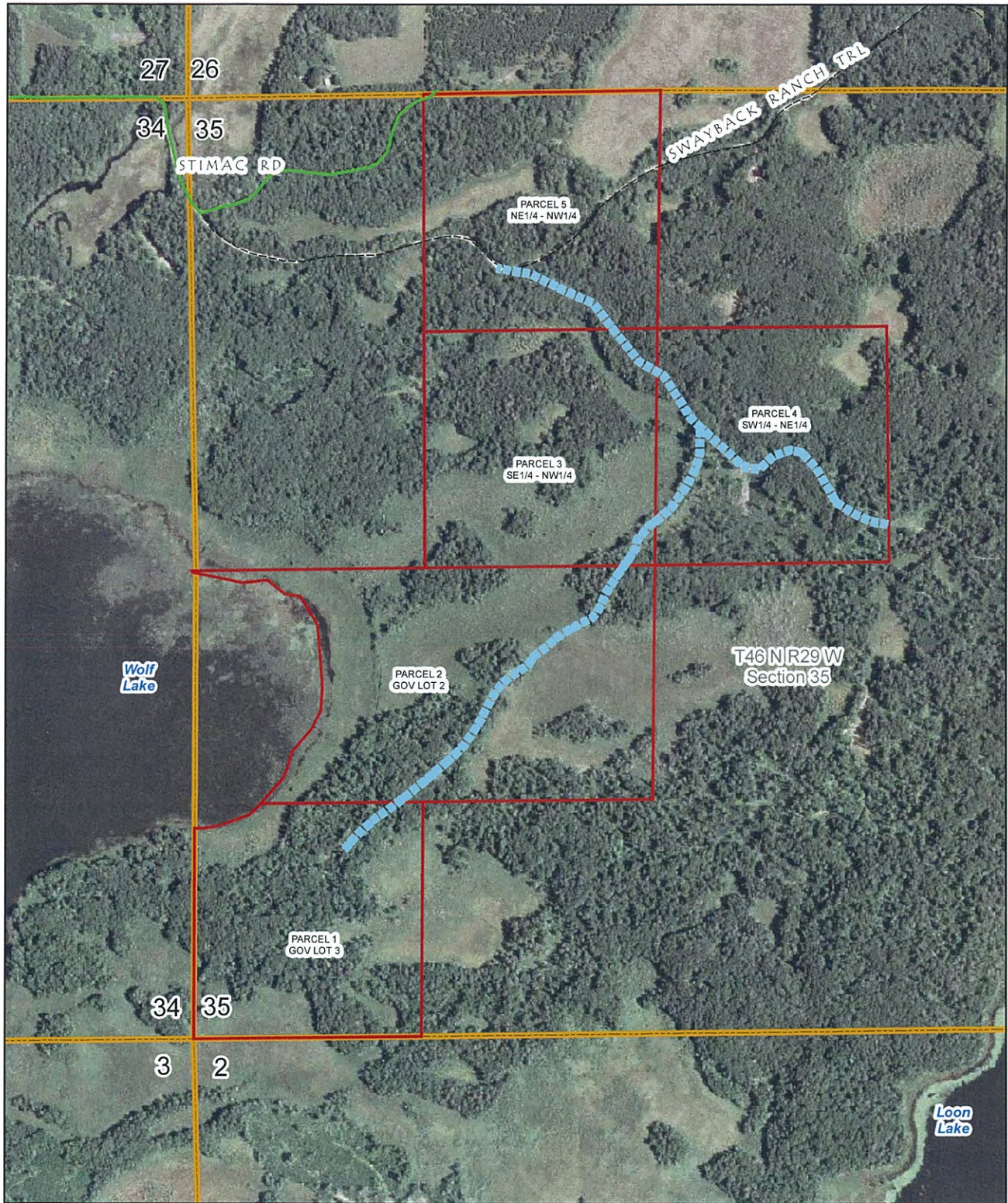
I hereby certify that the within instrument was filed  
in this office for record on the 15 day of July  
A.D. 2008 at 3 o'clock P.M.  
and was duly recorded as Doc. No. **0750731**

  
County Recorder  
Deputy

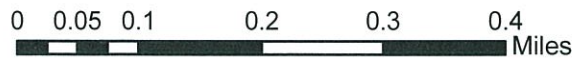
RETURN TO *Rand Sept.* 1 of 2

731

# Wolf Lake County Forest Road #4, Crow Wing County , Minnesota



1 inch equals 800 feet



----- Wolf Lake County Forest Road

MS 89.715 states "the roads to be recorded will be to the width of the actual use including ditches, backslopes, fills, and maintained rights-of-ways". County Forest Roads are variable in width and the map symbol representing the County Forest Roads is intended to represent the location of those County Forest Roads, not the actual width.